

**HELI**  
LIFTING THE FUTURE



SINCE 1958

**2.0t**

**G series** / INTELLIGENT  
ENVIRONMENT-FRIENDLY

**GII series AC ELECTRIC**  
*reach truck-sit down type*

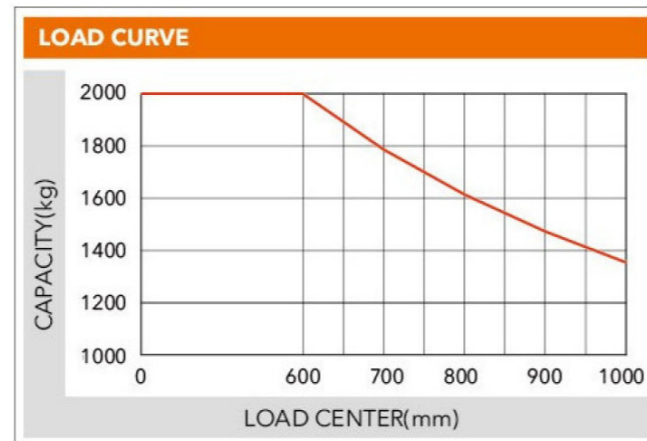
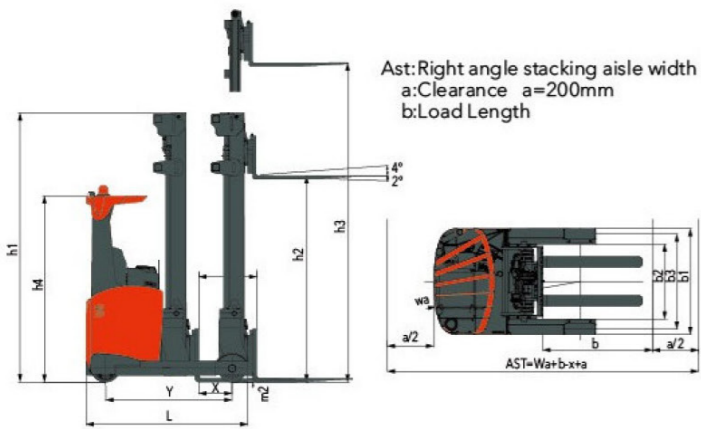


**HELI**

Heli UK • Unit 10 • Hewitts Ind Est • Elmbridge Road  
Cranleigh • Surrey • GU6 8LW • United Kingdom  
[www.heliuk.com](http://www.heliuk.com)

**WIDE VIEW FULL FREE 3-STAGE MAST**

Mast model	Lifting height (mm) h3	Free lifting height (mm) h2	Mast height, lowered (mm) h1	Load capacity (kg)	Fork tilt angle (front/rear) (°) α / β
ZSM460	4600	1280	2314	2000	2°/4°
ZSM480	4800	1340	2381	2000	2°/4°
ZSM540	5400	1540	2581	2000	2°/4°
ZSM570	5700	1640	2681	1900	2°/4°
ZSM630	6300	1840	2881	1900	2°/4°
ZSM675	6750	1940	2982	1800	2°/4°
ZSM700	7000	2030	3065	1700	2°/4°
ZSM715	7150	2080	3115	1700	2°/4°
ZSM750	7500	2190	3232	1700	2°/4°
ZSM800	8000	2360	3398	1500	2°/4°
ZSM850	8500	2530	3564	1300	2°/4°
ZSM900	9000	2690	3730	1100	2°/4°
ZSM950	9500	2860	3898	1000	2°/4°
ZSM1000	10000	3030	4064	850	2°/4°
ZSM1050	10500	3190	4230	800	2°/4°
ZSM1080	10800	3290	4330	750	2°/4°
ZSM1100	11000	3360	4398	700	2°/4°
ZSM1150	11500	3530	4564	650	2°/4°
ZSM1200	12000	3690	4730	550	2°/4°
ZSM1250	12500	3860	4898	500	2°/4°



**↑15%**  
**THE PERFORMANCE OF BATTERY INCREASES**

**Renewable energy technologies**

With the use of the excellent load-sensing steering system and AC controlling renewable energy technologies, the forklift is more energy-saving and the working hour of the battery is extended by 15%.

**Note:** The vertical axis denotes capacity and the horizontal axis denotes load center, which is calculated from front face of fork to centre of load. Standard load is one cubic metre hence 500mm load centre. When tilting forward or using non-standard forks, the capacity will be reduced as load center is increased.

**MANUFACTURER'S DATA AND DESIGN CHARACTERISTICS**

Character				HELI
1.01	Manufacturer			HELI
1.02	Model			CQD20
1.03	Configuration number			GB2S
1.04	Load capacity	Q	kg	2000
1.05	load center distance	C	mm	600
1.06	Power type			Battery
1.07	Driving type			Seated
1.08	Wheel base	Y	mm	1515
Tyre				
2.01	Tyre type			Polyurethane
2.02	Wheels, number front/rear (x=driven wheels)			1x/2
2.03	Track width, rear	b3	mm	1143
2.04	Wheel size, rear		mm	φ330×100
2.05	Wheel size, front		mm	φ343×114
Size				
3.01	Lift height	h3	mm	4600
3.02	Free lift	h2	mm	1280
3.03	Mast height, lowered	h1	mm	2314
3.04	Fork size:thickness×width×length	s/e/l	mm	40x122x1150
3.05	Fork adjusting width		mm	0~724
3.06	Fork tilt angle (front/rear)	α / β	°	2°/4°
3.07	Fork sideshifting		mm	±75
3.08	Truck body length (fork excluded)	L	mm	1942
3.09	Truck body width	b1	mm	1270
3.10	Distance between support arms	b2	mm	900
3.11	Reach distance	L4	mm	620
3.12	Height of overhead guard (cab)	h4	mm	2215
3.13	Ground clearance, below mast	m2	mm	75
3.14	Turning radius	Wa	mm	1751
3.15	Load distance, centre of support arm wheel to face of forks	X	mm	383
3.16	Right angle aisle width		mm	2200
3.17	Aisle width with pallet 1000 x 1200 across forks	Ast	mm	2810
Performance				
4.01	Travelling speed: with/without load		km/h	12/14
4.02	Lifting speed: with/without load		m/s	0.35/0.55
4.03	Lowering speed: with/without load		m/s	0.5/0.5
4.04	Reach speed, with/without load		m/s	0.11/0.11
4.05	Maximum climbing ability, with/without load		%	10/15
Weight				
5.01	Total weight (with battery)		kg	3560
5.02	Axle load, fork outreached, without load, front/rear		kg	1590/1970
5.03	Axle load, fork retracted, without load, front/rear		kg	2230/1330
5.04	Axle load, fork outreached, with load, front/rear		kg	550/5010
5.05	Axle load, fork retracted, with load, front/rear		kg	1960/3600
Battery				
6.01	Battery voltage/capacity Ks	V/Ah		560/48
6.02	Battery weight		kg	967
6.03	Battery box dimension		mm	1220×352×784
Motor and controller				
7.01	Drive motor power		kW	6.5
7.02	Lifting motor power		kW	12.5
7.03	Steering motor power		kW	0.4
7.04	Type of driving control			MOSFET/AC
7.05	Type of Lifting control			MOSFET/AC
7.06	Type of Steering control			MOSFET/AC
7.07	Transmission box			HELI special transmission box
7.08	Service brake			Electromagnetic brake
7.09	Hydraulic system working pressure		Mpa	18.5

NOTE: \*Detailed information about battery, please contact our salesmen or engineer.

# 2.0t

## GII series AC ELECTRIC reach truck-sit down type

### » FEATURES OF THE COMPLETED TRUCK

#### Three phase AC type motor technology

- › Three phase AC type motor control on travelling, lifting and steering
- › Good acceleration
- › Fast and sensitive response to travel direction shifting
- › Free from maintenance motor without carbon brush having long service life and low maintenance cost
- › Energy regeneration during deceleration extending operation hours
- › Max. travelling speed without load 20% increased
- › Max. travelling speed with load 27% increased

#### Newly designed hydraulic system

- › Newly designed hydraulic system with high working efficiency
- › High power lifting motor
- › MOSFET lifting speed governing electric controller
- › New type low noisy gear pump
- › Max. lifting speed without load 15% increased
- › Max. lifting speed with load 15% increased

**G series** / INTELLIGENT  
ENVIRONMENT-FRIENDLY

#### Optimized intelligent design

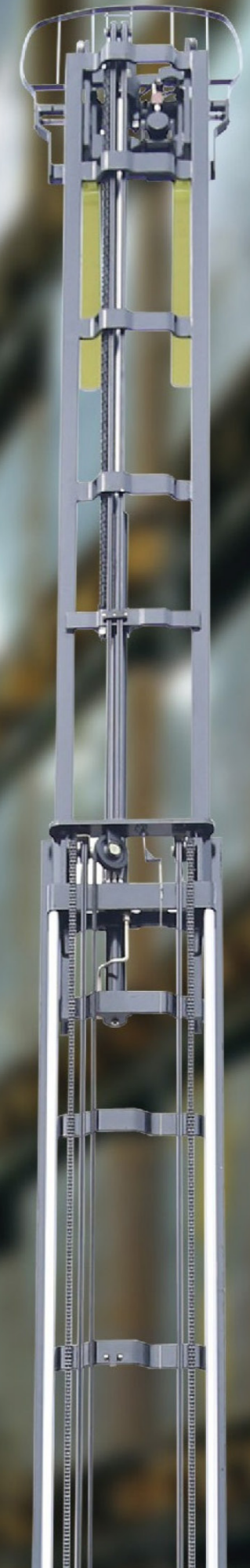
- › ZAPI travelling motor controller
- › ZAPI lifting motor controller
- › ZAPI steering motor controller
- › CAN bus technology
- › Emergency power off of both main circuit and control circuit
- › Parking brake on slope
- › Operation sequence protection
- › Travelling speed control
- › Electric controller self protection
- › Lifting height pre-selector (optional)

#### Advanced EPS electric powered steering

- › EPS electric powered steering offering easy, flexible, high efficient and mute operation
- › Steering motor controller
- › Automatic centering function
- › Real-time shifting between 180°steering mode and 360° steering mode
- › Automatic limit on speed and accelerated speed when steering

#### Easy operated finger control

- › To control hydraulic functions
- › Clear operating units
- › Proportional solenoid offering a stable and comfort lowering action





### **Display Module**

- > High quality meter displaying important operating data
- > Display of traveling direction and drive wheel angle
- > Display of 180°/360° steering mode
- > Display of battery quantity and fault code
- > Travelling mode selection
- > Lifting lock indication
- > Hour meter
- > Labor hour display
- > Time
- > Fork height display (optional)

### **Wide view mast**

- > Good view when loaded
- > Integral sideshifter
- > Mast vertical, fork tilt
- > High residual load capacity at high lift height
- > Lift height range:4600-12500mm
- > Buffering during lifting and lowering
- > Buffering on lifting and lowering limit
- > Buffering when cylinder moving forward

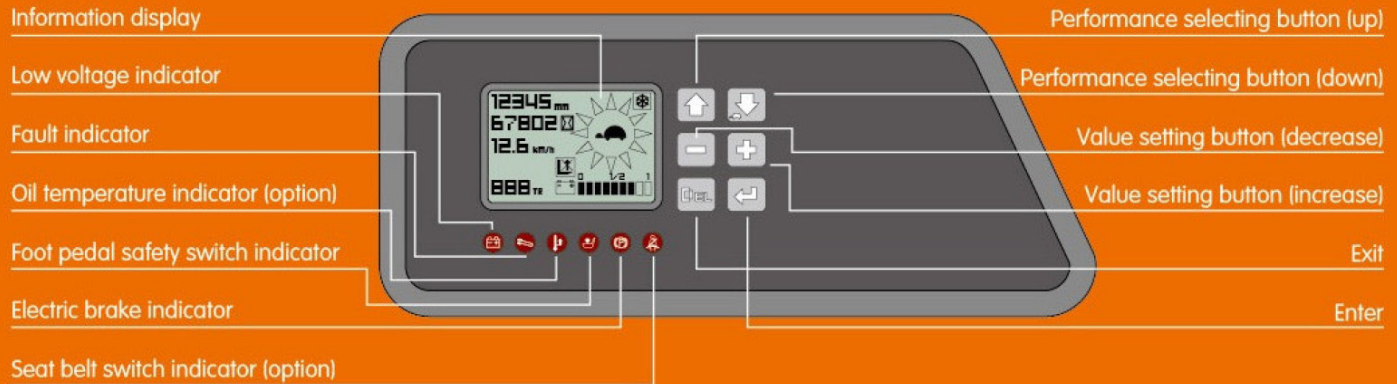
### **Comfortable cab**

- > Comfortable cab offering driver good working environment and easy operation
- > Easy reach to important operation
- > Adjustable seat (seat position /backrest angle )

### **Overhead guard**

- > Fence style overhead guard offering good operator visibility.
- > Good bevelled design with front ring beam giving a high standard of operator protection.

The new design instrument display gives a clear, convenient and more intuitive set of information to the operator, including operation status and fault detection.



## STANDARD CONFIGURATION

- Travelling motor 48v/6.5kw
- Lifting motor 48v/12.5kw
- Steering motor 48v/0.4kw
- Zapi travelling motor controller
- Zapi lifting motor controller
- Zapi steering motor controller
- Electromagnetic brake
- Battery 48v/560Ah
- DC/DC converter
- Low noisy gear pump
- Control valve ( four throw)
- 4600mm three stage full free lift mast
- Integral sideshifter
- Standard fork
- Backrest
- Polyurethane tyre
- LED meter
- Front working light
- Warning light

## OPTIONAL DEVICE

- Three-stage full free lift mast (other lifting height)
- Fork with other length
- Fork extension
- Lifting height pre-selector
- Monitoring system
- Other battery
- German brand hoppecker battery
- Italian brand FAAM battery
- Battery charger
- Customer own colours